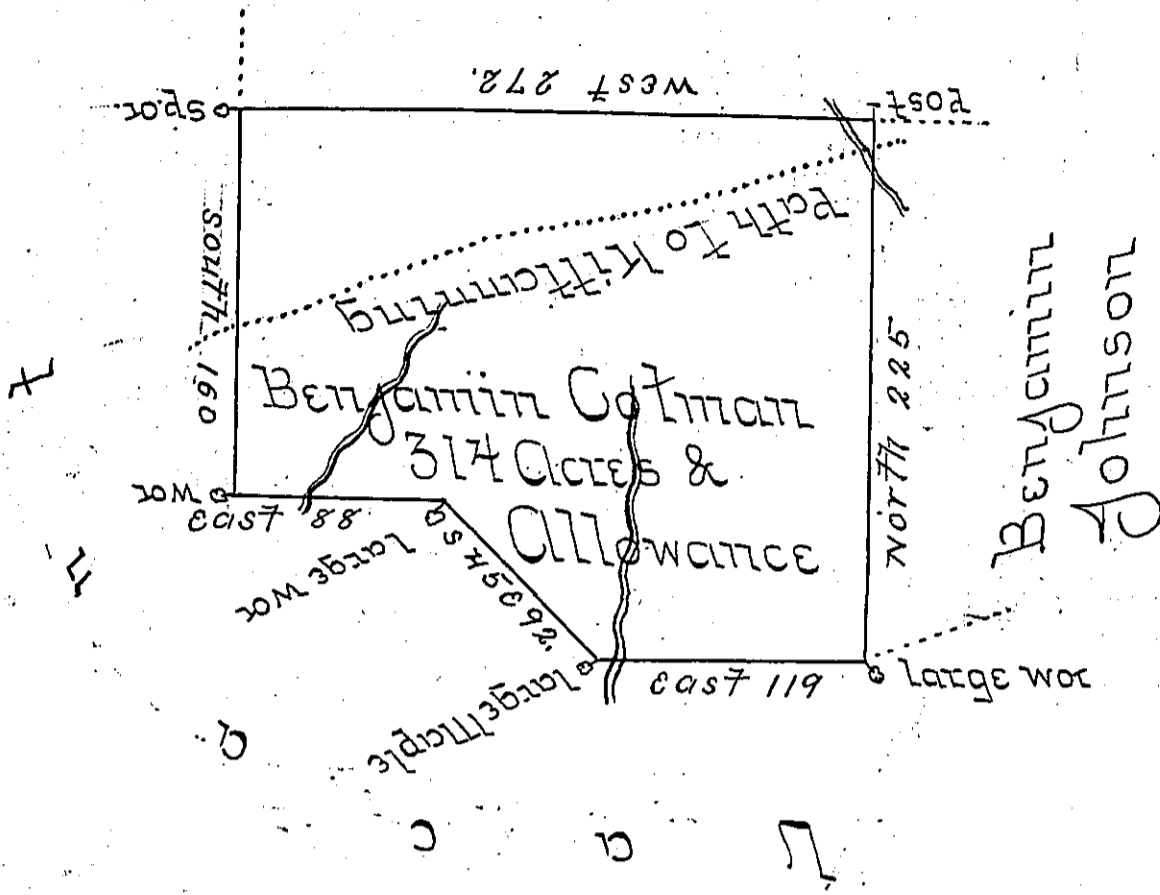


William Delwyn for Delwyn & Co.



A Draught of a Tract of Land called the Maple Level situate on (obl) Waters of the West Branch of Susquehanna and on the Path leading from Fraobl) town to the Kittanning about 5 1/2 Miles West from where the said Path crosses the West Branch adjoining Land of Benjamin Johnson and William Delwyn in Fraobl) town Township in the County of Bedford Containing three hundred and four (obl) Acres and the usual Allowance of six Percent for Roads &c Surveyed the 31st (obl) October 1775 for Benjamin Cotman in pursuance of a Warrant Dated the 23rd of July 1773 No. John Lukens Esq^r by Thomas Smith U.S. Surveyor General &c }

IN TESTIMONY that the above is a copy of the original remaining on file in the Department of Internal Affairs of Pennsylvania, made conformably to an Act of Assembly approved the 16th day of February, 1833, I have hereunto set my Hand and caused the Seal of said Department to be affixed at Harrisburg, this seventeenth day of May 1904.

Loac P. Brown
Secretary of Internal Affairs.